

Massachusetts State Hazard Mitigation and Climate Adaptation Plan

State Agency Vulnerability Assessment Reference Materials:

Coastal Erosion

Data Source: 2013 Massachusetts Hazard Mitigation Plan

Coastal erosion is defined by the U.S. Climate Resilience Toolkit as “the process by which large storms, flooding, strong wave action, sea level rise, and human activities wear away beaches and bluffs along coastlines.”¹ The map below depicts habitats that were identified as vulnerable to coastal erosion in the 2013 State Hazard Mitigation Plan. As sea level rise occurs, the higher daily tidal range will increase the vulnerability of these areas and the frequency with which they experience erosive forces. Thus, although maps of coastal erosion are not currently available for the survey planning horizons, the maps included in the “Coastal Flooding” hazard reference materials provide valuable information about future conditions pertaining to both sea level rise and coastal erosion.

¹ <https://toolkit.climate.gov/topics/coastal-flood-risk/coastal-erosion>

Present-Day Conditions

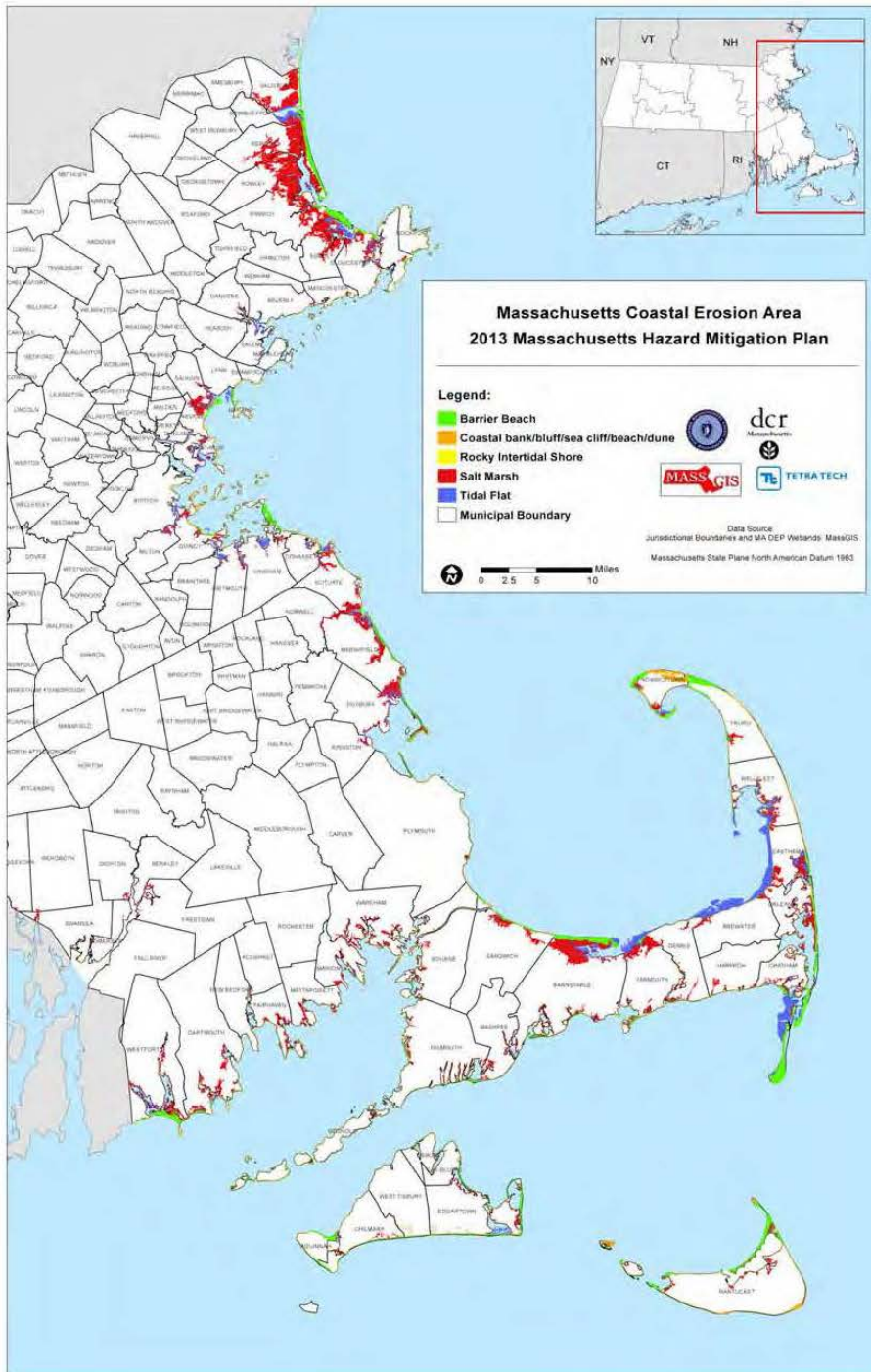


Figure 6-5. Coastal Erosion Hazard Area